

S15F SS316 wafer type ball valve PN16 - DN 125-150-200



Description

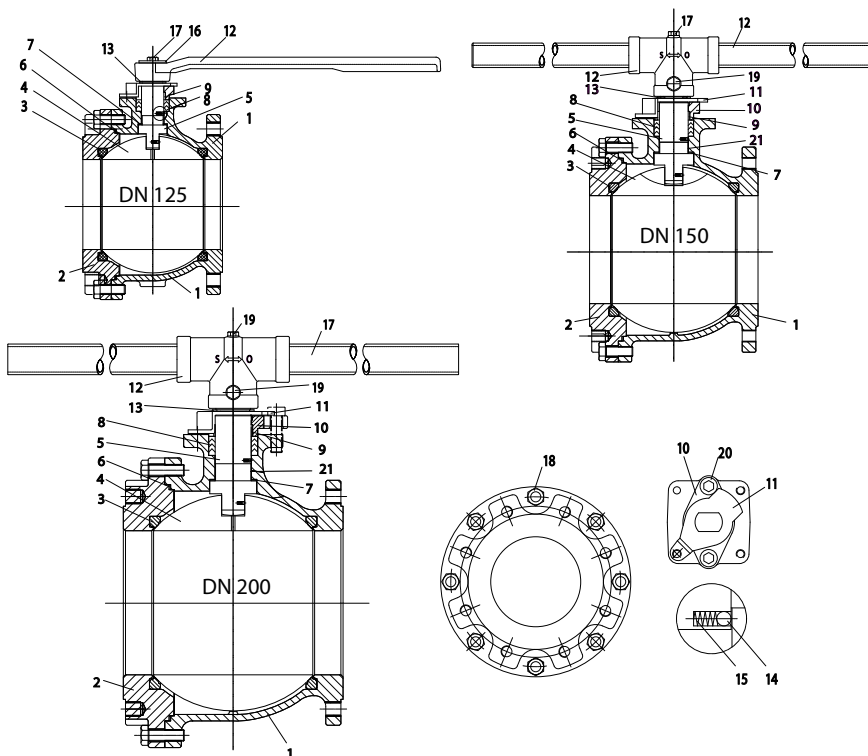
- 2-way wafer type ball valve with flange connection PN16
- Full bore
- Body, ball and stem SS316
- Mounting flange ISO 5211 for mounting electric or pneumatic actuators
- Seats and seals PTFE
- Pressure class PN16, flanged RF DIN2501
- Blow-out proof stem, lockable lever
- Anti-static
- Temperature -30° C up to 180° C.

Options:

- Automatic electric or pneumatic actuation
- Stem extension
- Endswitches

Certificates:

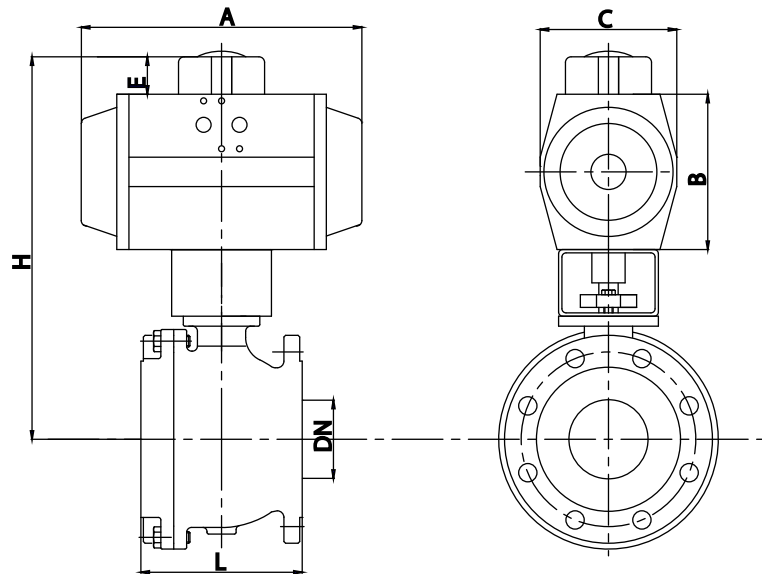
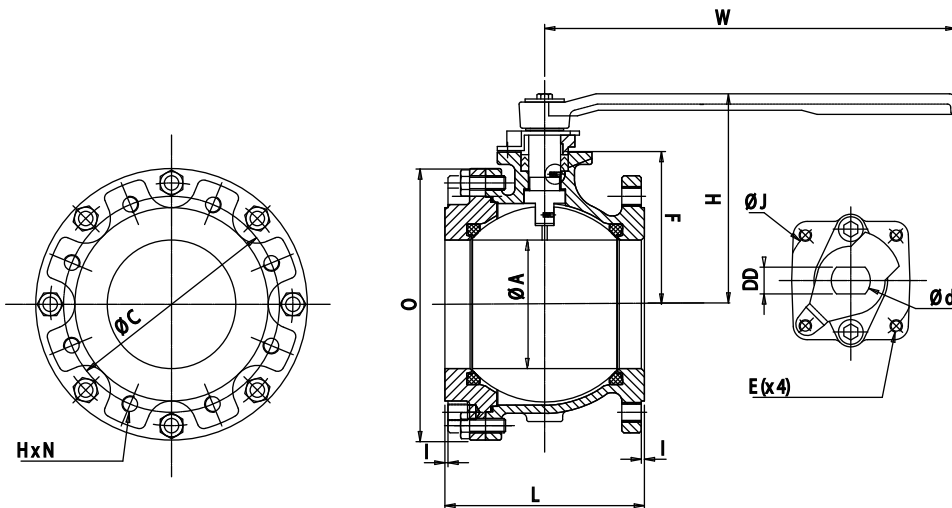
- 3.1 Material certificate
- CE declaration



Item	Description	Material S15F	Material C15F
1	Body	SS316	Carbon steel
2	Body part	SS316	Carbon steel
3	Seat	PTFE	PTFE
4	Ball	SS316	SS304
5	Stem	SS316	SS304
6	Body packing	PTFE	PTFE
7	Thrust washer	PTFE	PTFE
8	Seal	PTFE	PTFE
9	Bushing	SS	SS
10	Gland	SS	SS
11	Stop plate	SS	SS
12	Lever	Ductile iron	Ductile iron
13	Snapping	SS	SS
14	Ball	SS316	SS316
15	Spring	SS316	SS316
16	Bushing	Steel	Steel
17	Bolt	SS	SS
18	Bolt	SS	SS
19	Bolt	SS	SS
20	Bolt	SS	SS
21	Stem bearing	PTFE	PTFE

S15F SS316 wafer type ball valve PN16 - DN 125-150-200

Dimensions DN125 up to DN200 [mm]			
DN	125	150	200
A	125	150	200
C	210	240	295
H	298	298	371
W	114	114	187
G	14	16	16
J	102	125	140
d	31	38	48
DD	20	26	32
H x N	M16x8	M16x8	M20x12
L	194	234	305
I	3	3	3
F	400	800	1100
E	M10x1.5	M12x1.75	M16
O	264	312	305
Weight [kg]	40	65	130



With double acting pneumatic actuator [mm]								
DN	DW	A	B	C	E	H	L	Weight [kg]
DN125 (5")	AP4.5D	305	142	128	30	370	194	54
DN150 (6")	AP6D	462	200	175	30	462	234	92
DN200 (8")	AP8D	555	250	215	50	583	305	175

With single acting pneumatic actuator [mm]								
DN	EW	A	B	C	E	H	L	Weight [kg]
DN125 (5")	AP8S	555	250	215	50	478	194	92
DN150 (6")	AP8S	555	250	215	50	512	234	119
DN200 (8")	AP10S	750	335	290	50	668	305	263

Pneumatic actuators are based on PTFE seat rings, minimum air pressure of 6 bar(g) and medium of clean water 20°C with at 6 bar pressure