

S316F SS316 3-way ball valve PN16 - DN 125 up to DN 200



Description

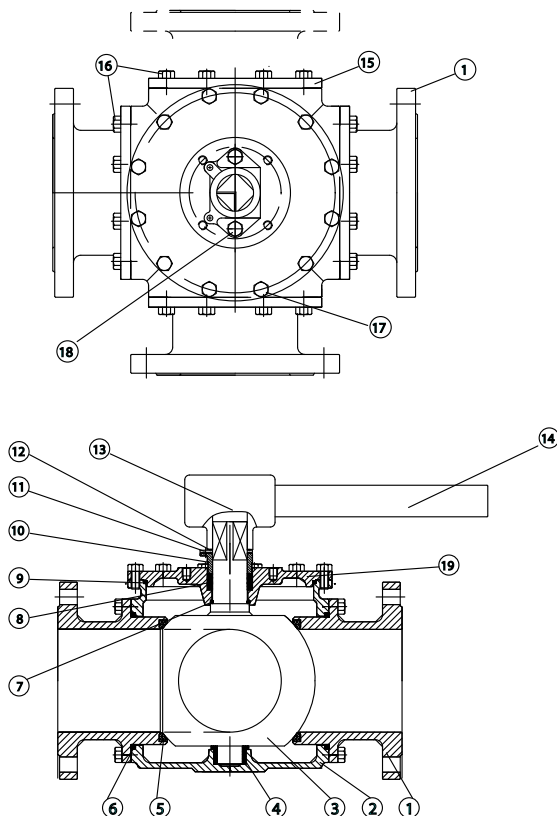
- 3-way ball valve with flange connection PN16
- Full bore, L- or T-port
- Body, ball and stem SS316
- ISO 5211 pattern for mounting pneumatic or electric actuators
- Seats and seals PTFE
- Pressure class PN16, flange RF DIN2501
- Blow-out proof stem, lockable lever
- Maximum working pressure 16 barg
- Temperature -30° C up to 200° C.
- Trunnion mounted ball

Options:

- Automatic electric or pneumatic actuation
 - Stem extension
 - Endswitches
 - Integral seats
 - 4-way version L-T-X or I port
- TFM seats
Peek seats
Carbon steel body

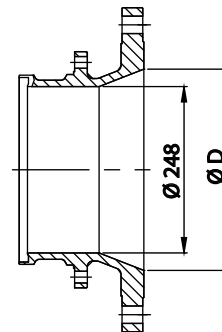
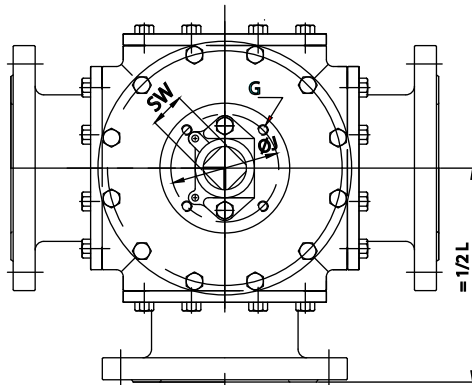
Certificats:

- 3.1 Material certificate
- CE declaration

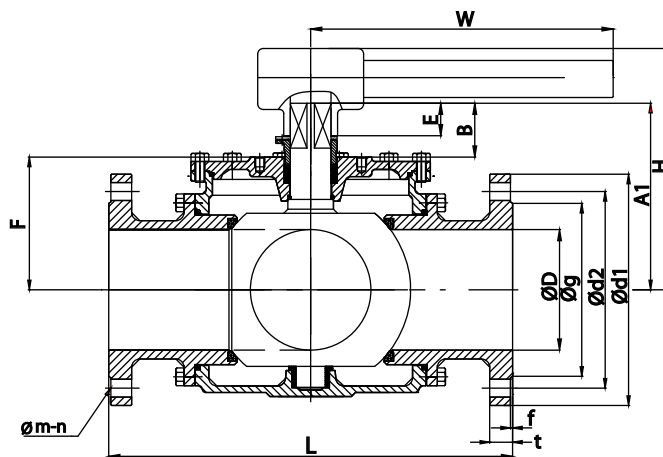


Item	Description	Material
1	Flange end	SS316
2	Body	SS316
3	Ball with stem	SS316
4	Bushing	PTFE+SS316
5	Seat	PTFE
6	Body seal	RPTFE
7	O-ring	Viton®
8	Stem seal	PTFE
9	Packing	PTFE
10	Gland	SS
11	Packing cover	SS
12	Stop plate	SS
13	Lever head	Steel
14	Lever	Steel
15	Cover	SS316
16	Bolt	SS
17	Bolt	SS
18	Bolt	SS
19	Top cover	SS316

S316F SS316 3-way ball valve PN16 - DN 125 up to DN 200

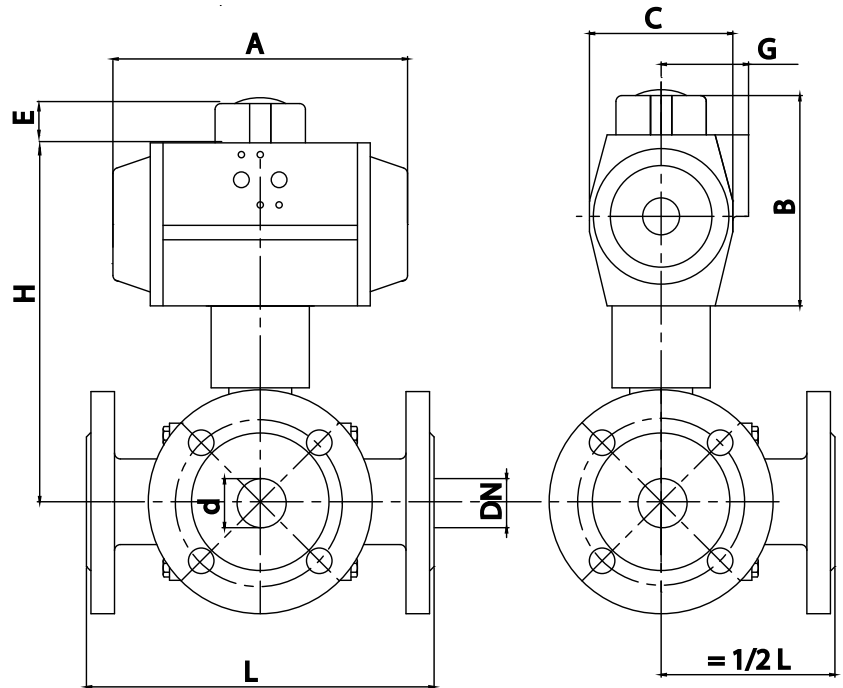


12" STD. PORT



Dimensions DN 125-150-200-250 [mm]				
DN	125	150	200	250
D	125	150	200	248
L	418	427	532	660
H	255	294	335	408
W	860	1200	1500	2000
F	140.5	159.5	201	252
E	36	36	36	59
J	125	125	125	140
G	M12	M12	M12	M16
d1	250	285	340	405
d2	210	240	295	355
SW	28	36	36	36
g	188	212	268	320
B	59	62	62	93
A1	198.5	222	263	345
f-t	3-22	3-22	3-22	3-22
Weight [kg]	69	136	235	320

S316F SS316 3-way ball valve PN16 - DN 125 up to DN 200



With double acting pneumatic actuator [mm]										
DN	DW	A	B	C	d	E	G	H	L	Weight [kg]
DN125	AP6D	468	230	175	125	30	-	440	418	96
DN150	AP8D	563	300	215	150	50	-	510	427	163
DN200	AP10D	750	385	290	200	50	-	636	532	261

With single acting pneumatic actuator [mm]										
DN	EW	A	B	C	d	E	G	H	L	Weight [kg]
DN125	AP10S	750	385	290	125	50	-	490	418	202
DN150	AP10S	750	385	290	150	50	-	595	427	270
DN200	O.A.				200				532	

Pneumatic actuators are based on PTFE seat rings, minimum air pressure of 6 bar(g) and medium of clean water 20°C with at 6 bar pressure