

S40F/C40F Flanged Ball valve PN16-PN40 - DN 15 up to DN 200



Description

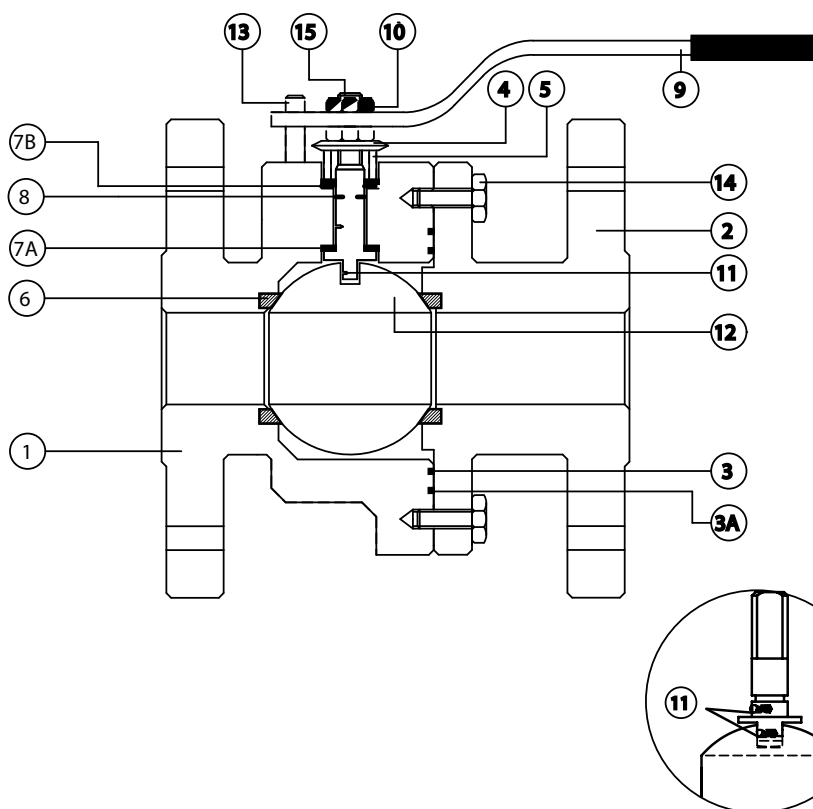
- 2-way Flanged ball valve with face to face according DIN3202 F1, F4 or F5
- Full bore
- Body SS316 or Carbon steel, ball and stem SS316
- ISO 5211 pattern for mounting pneumatic or electric actuators
- Seats and seals PTFE
- Drukklasse PN16 en/of PN40, flens RF DIN2501
- Blow-out proof stem
- Suitable for vacuum
- Anti-static
- Temperature -30° C up to 180° C.

Options:

- Automatic electric or pneumatic actuation
- Stem extension, Endswitches, Heating jacket
- Pressure classes ANSI150-300-600 and PN63-100 on request
- Peek, RPTFE, TFM, Integral, PTFE RVS filled seats
- Materials as Inconel, SS316ti, Hastelloy etc on request
- Fire safe version, Metal seats

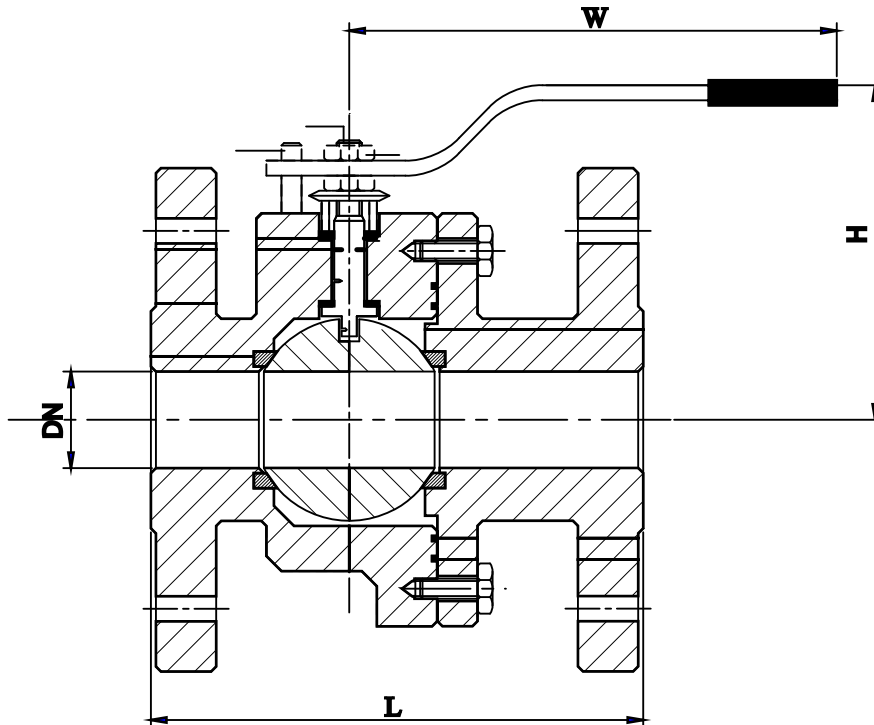
Certificats:

- 3.1 Material certificate
- CE declaration
- Fire safe API607 4e edition
- TA Luft declaration



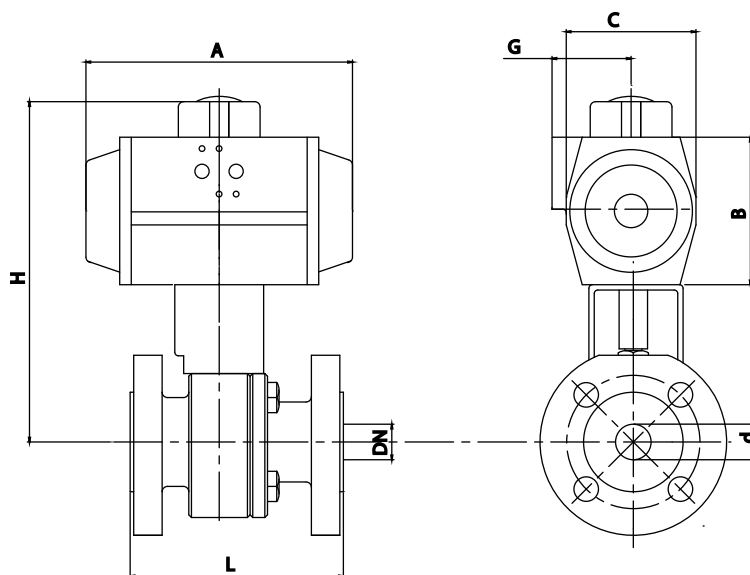
Item	Description	Material S40F	Material C40F
1	Body	SS316	Carbon steel
2	Body end	SS316	Carbon steel
3	Body seal	PTFE	PTFE
3A	O-ring	Viton®	Viton®
4	Disc spring	Steel	Steel
5	Gland	SS	SS
6	Seat	PTFE	PTFE
7A	Thrust washer	PTFE	PTFE
7B	Seal	PTFE	PTFE
8	O-ring	Viton®	Viton®
9	Lever	Steel zinc plated	Steel zinc plated
10	Nut	SS	Steel
11	Anti-static	SS316	SS316
12	Ball	SS316	S316
13	Stop	Steel	Steel
14	Bolt	SS	Steel
15	Stem	SS316	SS316

S40F/C40F Flanged Ball valve PN16-PN40 - DN 15 up to DN 200



Dimensions DN 15 up to DN 200 [mm]												
DN	15	20	25	32	40	50	65	80	100	125	150	200
d	14	20	24	32	38	48	62	75	97	118	144	194
W	145	145	180	180	275	275	380	380	440	440	610	610
H	64	66	85	90	118	126	140	144	195	212	265	320
L F1	130	150	160	180	200	230	290	310	350	-	-	-
L F4	115	120	125	130	140	150	170	180	190	-	-	-
L F5	-	-	-	-	-	-	-	-	-	325	350	400
L 150#	108	117	127	140	165	178	190	203	229	254	267	292
L 300#	140	152	165	178	191	216	241	283	305	381	403	419
PN16 [kg]	4	5	7	9	12	14	17	24	32	50	67	120
PN40 [kg]	4	5	7	9	12	14	20	30	44	60	85	145

S40F/C40F Flanged Ball valve PN16-PN40 - DN 15 up to DN 200



With double acting pneumatic actuator [mm]										
DN	DW	A	B	C	d	E	G	H	L	Weight [kg]
DN15 (1/2")	AP1D	137	87	60	14	20	41	150	115	4.4
DN20 (3/4")	AP1D	137	87	60	20	20	41	155	120	5.3
DN25 (1")	AP1D	137	87	60	24	20	41	159	125	6.4
DN32 (1 1/4")	AP2D	150	103	73	32	20	44.5	193	130	9.2
DN40 (1 1/2")	AP3D	204	120	85	38	20	49.5	213	140	12.5
DN50 (2")	AP3D	204	120	85	48	20	49.5	226	150	16
DN65 (2 1/2")	AP3,5D	230	130	98	62	20	53	251	170	24.9
DN80 (3")	AP4D	271	145	110	75	30	58	264	180	31.5
DN100 (4")	AP4D	271	145	110	97	30	58	279	190	50
DN125 (5")	AP5D	360	185	140	118	30	-	349	325	71
DN150 (6")	AP5D	360	185	140	144	30	-	376	350	98
DN200 (8")	AP6D	462	230	175	194	30	-	531	400	170

With single acting pneumatic actuator [mm]										
DN	EW	A	B	C	d	E	G	H	L	Weight [kg]
DN15 (1/2")	AP2S	150	103	73	14	20	44.5	166	115	5
DN20 (3/4")	AP3S	204	120	85	20	20	49.5	198	120	7
DN25 (1")	AP3S	204	120	85	24	20	49.5	202	125	8.1
DN32 (1 1/4")	AP3S	204	120	85	32	20	49.5	210	130	10.5
DN40 (1 1/2")	AP3,5S	230	130	98	38	20	53	223	140	14.4
DN50 (2")	AP3,5S	230	130	98	48	20	53	236	150	17.9
DN65 (2 1/2")	AP4S	271	145	110	62	30	58	256	170	27
DN80 (3")	AP5S	360	185	140	75	30	-	324	180	38.8
DN100 (4")	AP5S	360	185	140	97	30	-	267	190	57
DN125 (5")	AP5,5S	380	206	160	118	30	-	370	325	102
DN150 (6")	AP6S	462	230	175	144	30	-	421	350	111
DN200 (8")	AP8S	555	300	215	194	50	-	601	400	190

Pneumatic actuators are based on PTFE seat rings, minimum air pressure of 6 bar(g) and medium of clean water 20°C with at 6 bar pressure