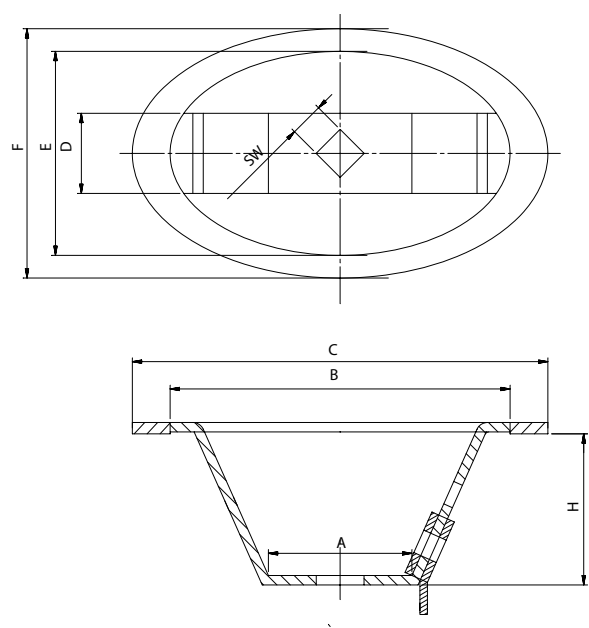


Oval wheel lever for ball valves



These oval wheel levers can be used for our ball valves with direct ISO5211 mountingflange, as our types S13D and S33D.
Square 9 and 11, up to DN32/ 1 1/4".

Dimensions [mm]		
square	9	11"
A	38	43
B	90	110
C	110	136
H	40	42
D	21	25
E	54	66
F	66	80
SW	9	11

Materials

Oval wheel lever is made from Stainless steel and covered with an PVC protection on the grip part on top.
It is possible to secure it with an padlock..