

Spring return lever for ball valves

Principle

The build-in spring in the lever, automatically returns the valve to the initial position when the lever is released. With this feature, the ball valve gets the preferred position.

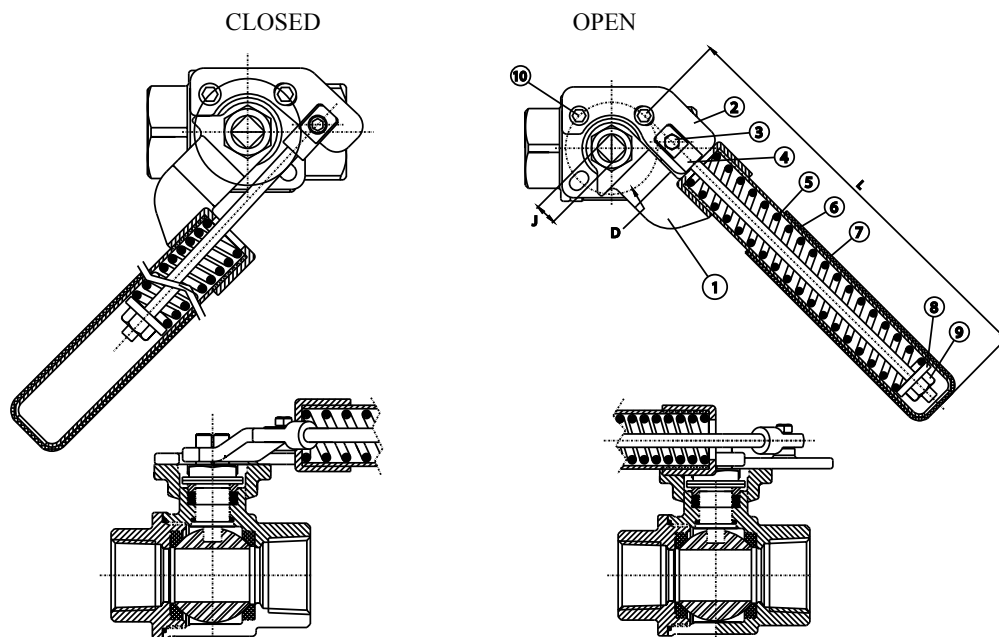
Application

By using a spring return or fail-safe lever becomes , a ball valve will either be normally open (NO) or normally closed (NC).

The spring return lever is easy to mount on the following Vapo ball valves:
Type S02D, S13D, S33D, S57D, S15D, S216D, C216D and S316D
Size 1/4" up to 2" (DN50)

Also, with the necessary adjustments, the valve types A25 and A35 up to DN 50 can be provided with this spring return lever

Before ordering a separate spring return lever, please first check the necessary torque figure and connection

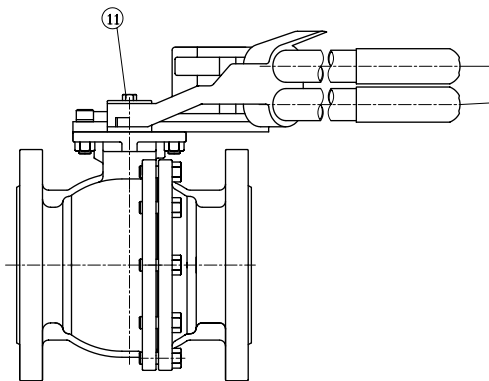
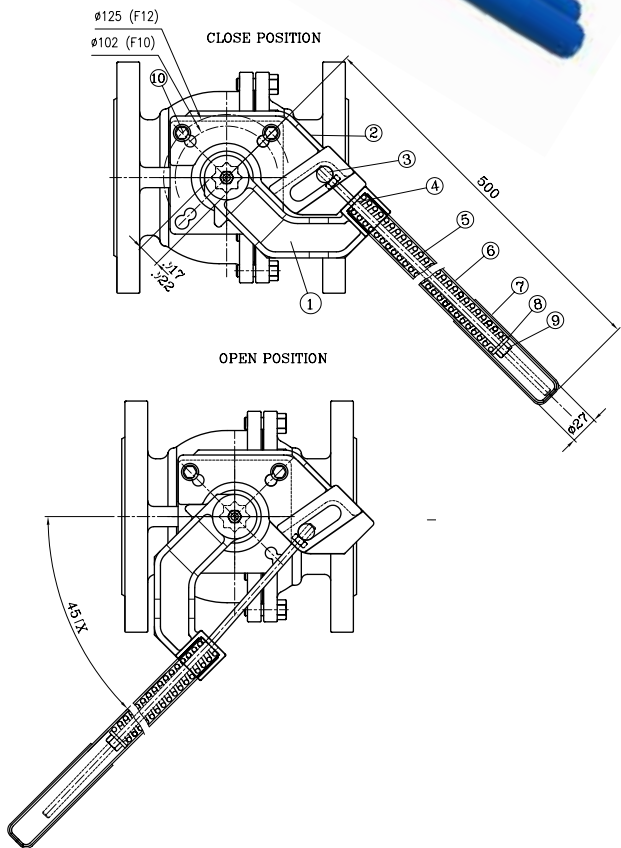
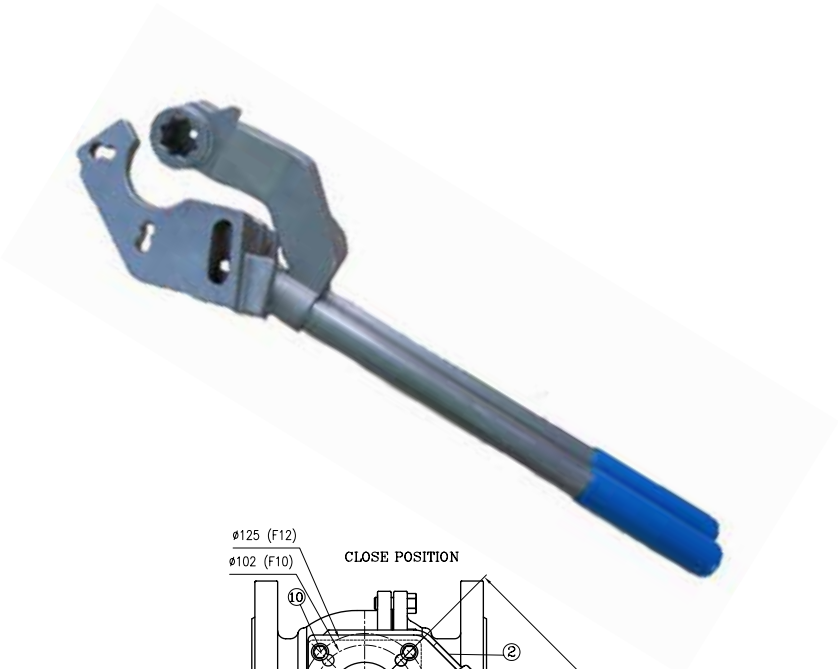


Materials		
Item	Description	Materials
1	Leverhead	SS
2	Baseplate	SS
3	Hingeaxel	SS
4	Rod	SS
5	Spring	SS
6	Lever	SS
7	Grip	PVC
8	Washer	SS
9	Nut	SS
10	Bolt	SS

Dimensions [mm]				
DN	L	J	D (ISO 5211)	[Nm]
1/4" up to 3/4"	170	9	F03/F04	15
1" up to 1 1/4"	220	11	F04	22
1 1/2" up to 2"	280	14	F05	35

Spring return lever for ball valves

2 1/2" up to 4".



Materials		
Item	Description	Materials
1	Leverhead	SS
2	Baseplate	SS
3	Hingeaxel	SS
4	Rod	SS
5	Spring	SS
6	Lever	SS
7	Grip	PVC
8	Washer	SS
9	Nut	SS
10	Bolt	SS

Dimensions [mm]				
DN	L	J	D (ISO 5211)	[Nm]
2 1/2" up to 4"	500	22	F10/F12	100