

Extension for ball valves

Principle

The control is raised with an extension.

Application

By application of an extension, the distance between the valve and the control increases. Reasons to apply an extension:

- to provide room for insulation of the valve
- the temperature of the valve is too high for operating the valve with the mounted lever (safety)
- when the valve is mounted in a place without not enough free space to operate the valve.

The extension is easy to mount on the following Vapo ball valves :

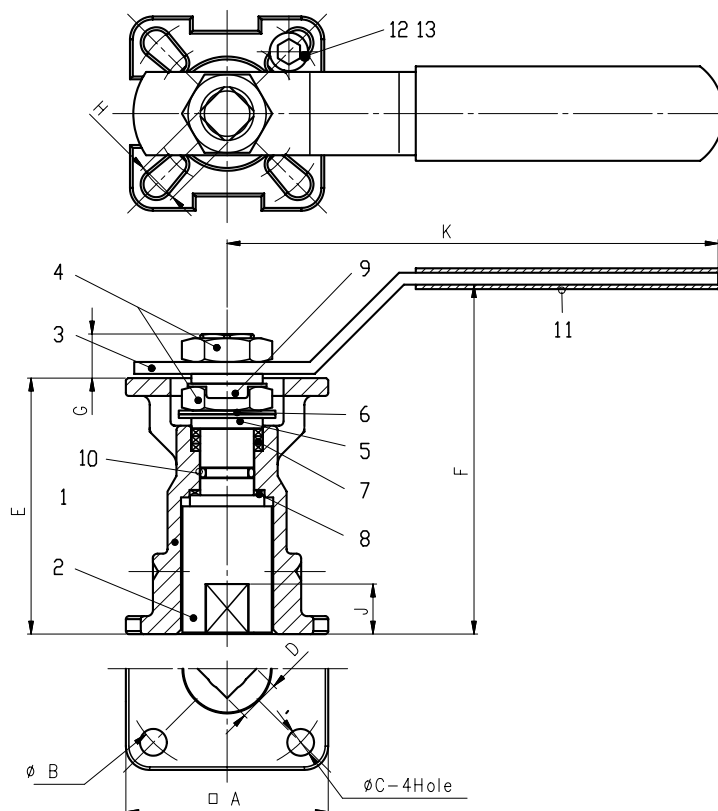
Type S02D, S13D, S33D, S57D, S15D, S216D, C216D and S316D

Size 1/4" up to 4" (DN100)



Before ordering always first check the connections

The use of an extension in combination with an actuator is possible, however our standard is a bracket and adapter set.



Materials		
Item	Description	Materials
1	Extension	SS
2	Adapter	SS
3	Lever	SS
4	Nut	SS
5	Gland	SS
6	Springwasher	SS
7	Seal	PTFE
8	Frictionring	PTFE+15%GV
9	Lockwasher	SS
10	O-ring	Viton®
11	Grip	PVC
12	Stopbolt	SS
13	Nut	SS

Dimensions [mm]											
DN	A	B	C	D	E	F	G	H	J	K	ISO 5211
1/2" up to 3/4"	42	42 (F04)	6	■ 9	61	88	8	■ 9	5,5	110	F03/F04
1" up to 1 1/4"	48	50 (F05)	7	■ 11	67	94	10	■ 11	11,5	135	F04/F05
1 1/2" up to 2"	68	70 (F07)	9	■ 14	86	118	15	■ 14	16,5	165	F05/F07
2 1/2" up to 4"	94	102 (F10)	11	■ 17	105	-	17	■ 17	19,5	-	F07/F10